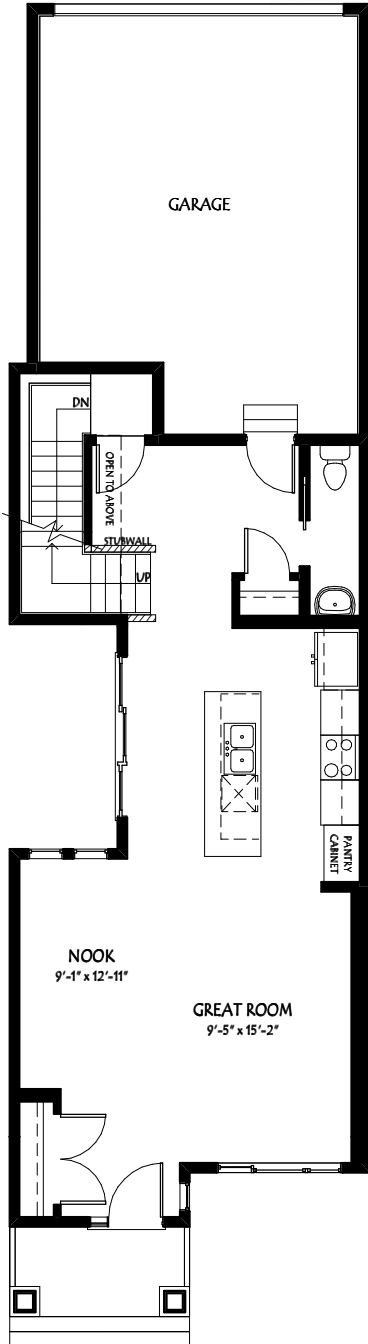


THE
Purcell

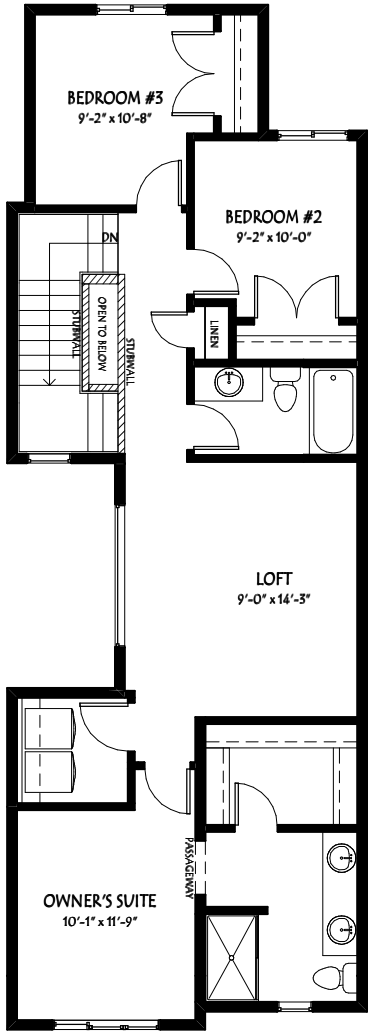


- SQUARE FEET 1805
- BEDROOMS 3
- BATHROOMS 2.5
- STYLE 2-storey, Rear attached garage
- HOME WIDTH 20'
- GARAGE Double 19' x 20'
- SPECIFICATION Inspire Series

URBAN *Courtyard*



MAIN FLOOR 809 SF



UPPER FLOOR 996 SF

yourpacesetter.com

Square footage includes stairwells. This plan is published by Pacesetter Homes Ltd. Dimensions shown are approximate and subject to change without notice. All rights reserved. Reproduction, in whole or in part, without permission of Pacesetter Homes Ltd. is prohibited. Brochure cannot be used for construction.



A QUALICO Company