



# Optimize Your Equity Program

**P** 780-886-0345

**E** [concierge@yourpacesetter.com](mailto:concierge@yourpacesetter.com)

**yourpacesetter.com**

# Optimize Your Equity Program

## PROGRAM OVERVIEW

At Pacesetter Homes, we offer an Optimize Your Equity Program to help simplify your journey to becoming a proud homeowner.

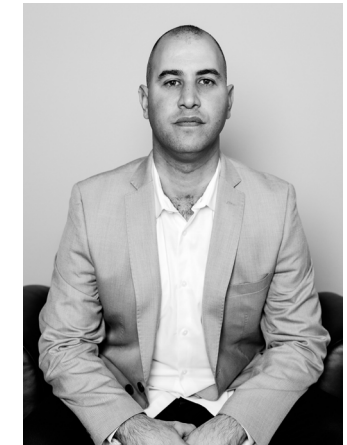
If you have a home to sell, the Optimize Your Equity Program allows access to the concierge services of our preferred real estate partner, Wally Karout with Royal LePage, at a significantly reduced rate. Our preferred real estate partner will walk you through every step of the home sale process and ensure a smooth and timely transition into your new Pacesetter Home.

# Our Preferred Real Estate Partner

## WALLY KAROUT - ROYAL LEPAGE

Wally was born and raised in Edmonton and has been a licensed Realtor for nearly 20 years. He has achieved many awards such as: The Directors Platinum Award, The Presidents Gold Award, The Diamond Award Top 5% Medallion Sales Award, and The Award of Excellence. Wally and his team are committed to providing you with excellent service and continuing to share their extensive real estate knowledge.

P 780-718-4848 E wallykarout@royallepage.ca



## PROGRAM QUALIFICATIONS

In order to qualify for the complimentary Optimize Your Equity Program, you must adhere to the following guidelines:

- Only our preferred real estate partner Wally Karout with Royal LePage may be used to sell your home
- Conditions must be removed on a new Pacesetter home in order to qualify for this program
- Home must be listed at current market value (sellable in today's market within 30 days)
- The purchase of your new Pacesetter Home must not be conditional to the sale of your current home
- Participation in this program does not circumvent the requirement of a mortgage approval letter for the amount of your new Pacesetter Home
- A current RPR must be obtained with compliance from issuing jurisdiction
- Commissions must be returned to the builder in full no later than 30 days should you fail to close on your new Pacesetter Home
- Use of this program must be presented with the initial Offer to Purchase of a qualifying Pacesetter Home

